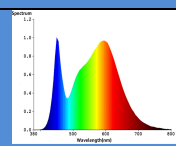


Product Information		Lepro LE	
Product conformity acc. to	:	Ecodesign requirements	
Supplier's name or trade mark	:	Lepro, LE	
Supplier's address	:	One Spencer Dock, North Wall Quay, Dublin 1, D01 X9R7, Ireland	
Model identifier	:	350031-DW-EU	
Model identifier of all equivalent models	:	350031-DW-EU	
With separate control gear	:	no	
Type of light source			
Lighting technology used	:	LED	Non-directional or directional
Mains or non-mains	:	NMLS	Connected light source (CLS)
Colour-tunable light source	:	no	Envelope
High luminance light source	:	no	Anti-glare shield
Dimmable	:	no	
General product parameters			
Energy consumption in on-mode (kWh/1000h)	:	100.0	Energy efficiency class
Useful luminous flux, indicating if it refers to the flux in a sphere, in a wide cone or in a narrow cone (lm)	:	10500	Correlated colour temperature, rounded to the nearest 100K, or the range of correlated colour temperatures rounded to the nearest 100K, that can be set
On-mode power (Pon), expressed in W	:	100.0	Standby power (Psb) expressed in W and rounded to the second decimal
Networked standby power (Pnet) for CLS, expressed in W and rounded to the second decimal	:	-	Colour rendering index, rounded to the nearest integer, or the range of CRI values that can be set
Outer dimensions without separate control gear, lighting control parts and non-lighting control parts if any (mm)	:	Height: 252.8 Width: 252.8 Depth: 37.6	Spectral power distribution in the range 250nm to 800 nm at full-load
Claim of equivalent power	:	-	If yes, equivalent power (W)
			Chromaticity coordinates (x and y)
Parameters for directional light sources			
Peak luminous intensity (cd)	:	6000	Beam angle in degrees, or the range of beam angles that can be set
Parameters for LED and OLED light sources			
R9 colour rendering index value	:	8	Survival factor
the lumen maintenance factor	:	0.96	
Parameters for LED and OLED mains light sources			
displacement factor	:	-	Colour consistency in McAdam ellipses
Claims that an LED light source replaces a fluorescent light source without integrated ballast of a particular wattage	:	-	If yes then replacement claim (W)
Flicker metric (Pst LM)	:	-	Stroboscopic effect metric (SVM)



Declared/Measured values			
Voltage (V)	:	230	Useful luminous flux (lm) : 10500 in cone 120
Frequency (Hz)	:	50	Luminance-HLLS (cd/mm ²) : - HLLS
On-mode power P _{on} (W)	:	100.0	Beam angle (°) : 120 ° DLS
Standby power P _{sb} (W)	:	0.00	Networked standby power P _{net} (W) : - CLS
Displacement factor	:	-	CCT(K) : 4000
Colour consistency (SDCM)	:	6	CRI : 80
Flicker metric P _{stLM}	:	-	Stroboscopic effect metric SVM : -
P _{onmax} (W)	:	120.1	excitation purity for Blue 440nm-490nm : - CTLS
Total mains efficacy (lm/W)	:	114.35	excitation purity for Green 520nm-570nm : - CTLS
LB0750(H)	:	50000	excitation purity for Red 610nm-670nm : - CTLS
Parameters for separate control gear			
Voltage (V)	:	-	Maximum output power (W) : -
No-load power P _{no} (W)	:	-	Efficiency in full load (%) : -
Standby power P _{sb} (W)	:	-	Networked standby power P _{net} (W) : -
the type of light sources for which it is intended	:	-	compatible dimmable light sources : -
Outer dimensions (mm)	Hight	-	mass(g) : -
	Width	-	
	Depth	-	
$\eta_{TM} = (\Phi_{use}/P_{on}) \times FTM \text{ (lm/W)} = 114.35 \text{ lm/W}$ 110 ≤ η_{TM} < 135 energy efficiency class correspond to E			
Energy efficiency and functional requirements			
Classification acc. To 2019/2020	<input checked="" type="checkbox"/>	Directional lamp	<input type="checkbox"/> Non directional lamp
Compliance:	<input checked="" type="checkbox"/>	Yes	<input type="checkbox"/> No
Measurement conditions			
Standards	:	EU 2019/2015, EU 2019/2020	
Tolerances	:	according to ErP regulation	
Measurement setup	:	4P, SSL port, 1.5m sphere	
Voltage (V)	:	declared voltage	
Burning position	:	Base up	
Ambient temperature:	:	25°C +/- 2K	
Burn in	:	1h	
Total operating time during measurement	:	15min	
Non standard stability criteria	:	Luminous flux tolerance 0.5% within 60 sec.	
Uncertainties	:	according to JCGM (GUM) and CIE 198	
Important notes / WARNINGS:			
The product needs to be powered off before install; Please see users' instruction			
Signature	:	Vick Xun	

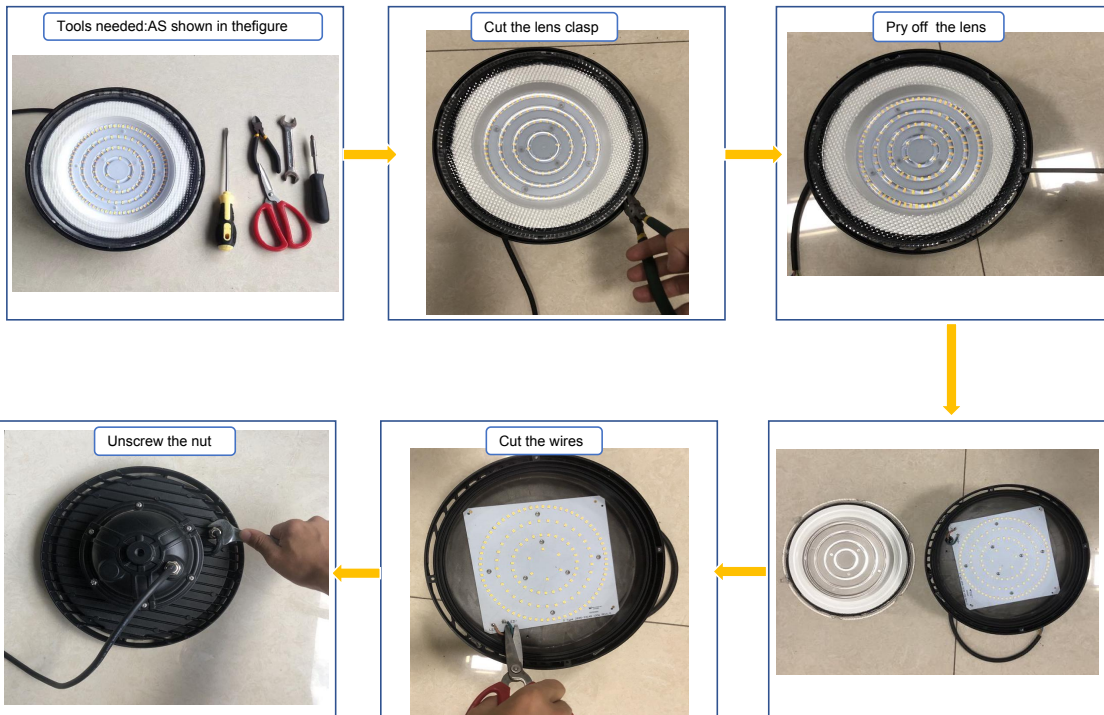
Disassembly Instruction for removing LS and SCG

Luminaire Model No	Light Source Model No	Product Name of Luminaire	Type of Light Source	Technical Justification	Type of Separate Control Gear	Technical Justification
350031-DW-EU	205810006768	UFO High Bay 100W	Non-replaceable, removable	Due to IP protection requirements, the luminaire housing is glued.	Non-replaceable, removable	No protection against electric shock when replacing the separate control gear.

Luminaire Photo



Disassembly Instruction

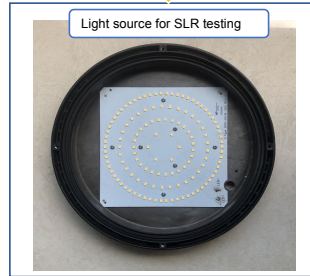


Explanation text size : Arial 9 Black

Flow arrow used format



Disassembly Instruction



Explanation text size : Arial 9 Black

Flow arrow used format

